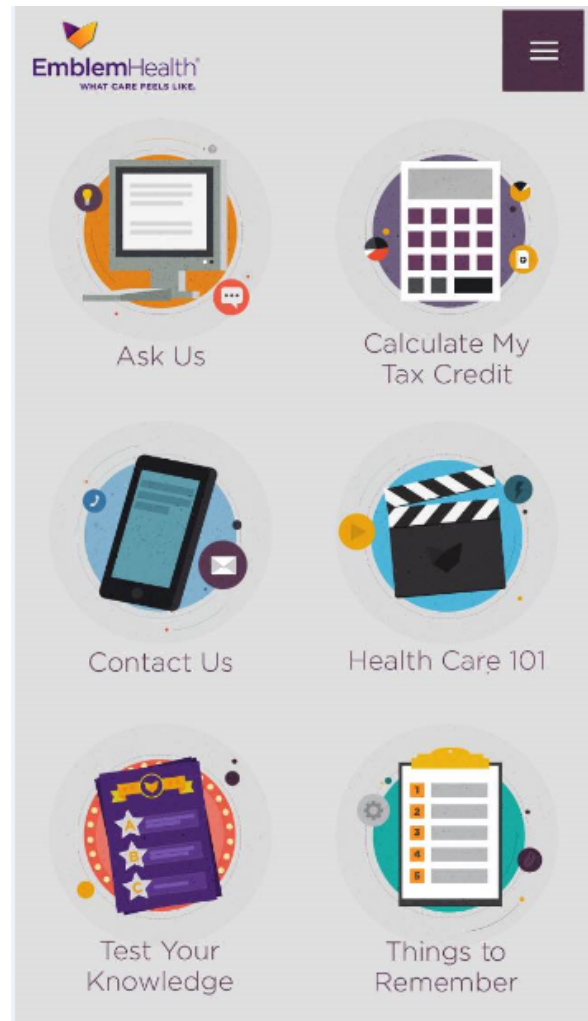


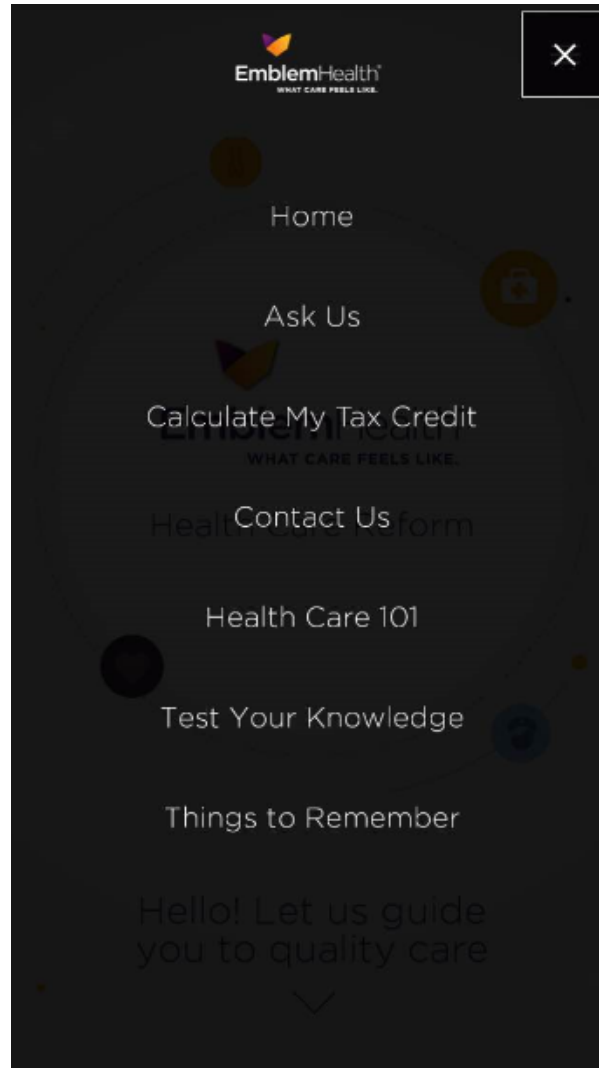
# LANDING PAGE



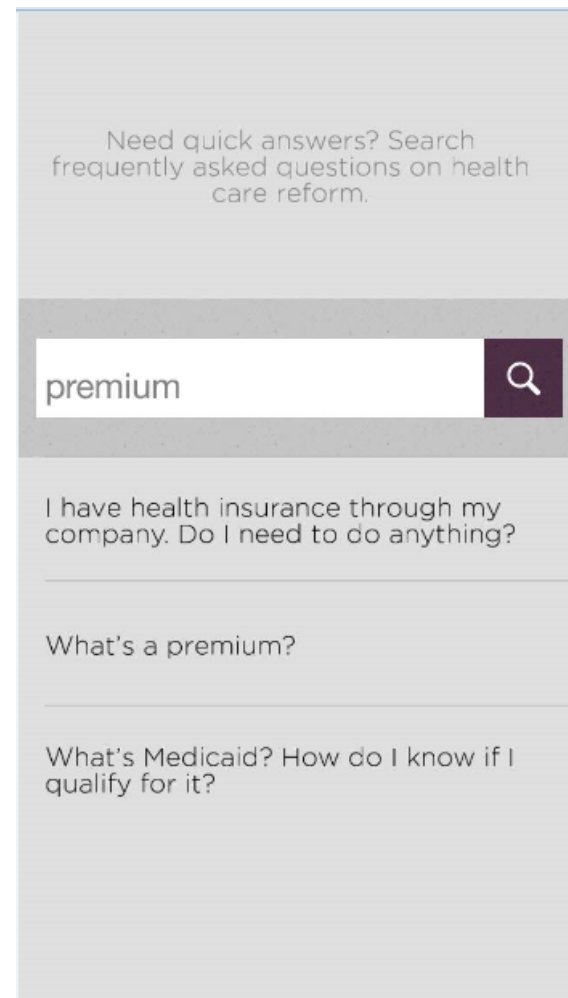
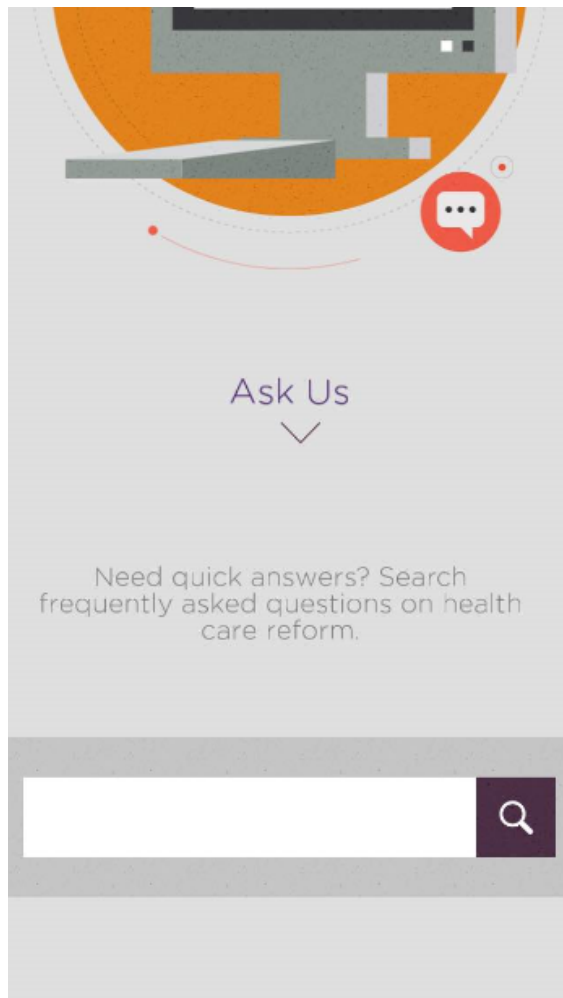
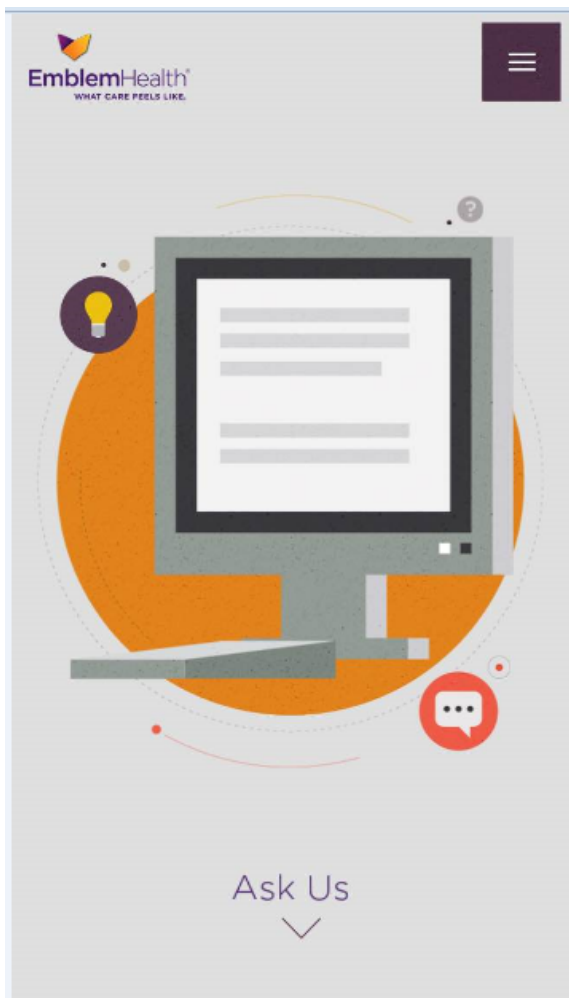
# HOME PAGE – APP SECTIONS



# SEARCH MENU



# SECTION 1: ASK US



# SECTION 2: CALCULATE MY TAX CREDIT

**EmblemHealth**  
WHAT CARE FEELS LIKE.

**1. Your Basics**

You

Birth date

Zip code

Zip code

+ Add Family Member

Next Step

**2. Your Household Income**

both on your household income and on the people applying for insurance, which includes 0 additional household members.

\$ **40,000**

\$10,000 or Less \$200,000 or More

See Results

**3. Results**

Great news, you may qualify for financial help. See your personalized plan options below.

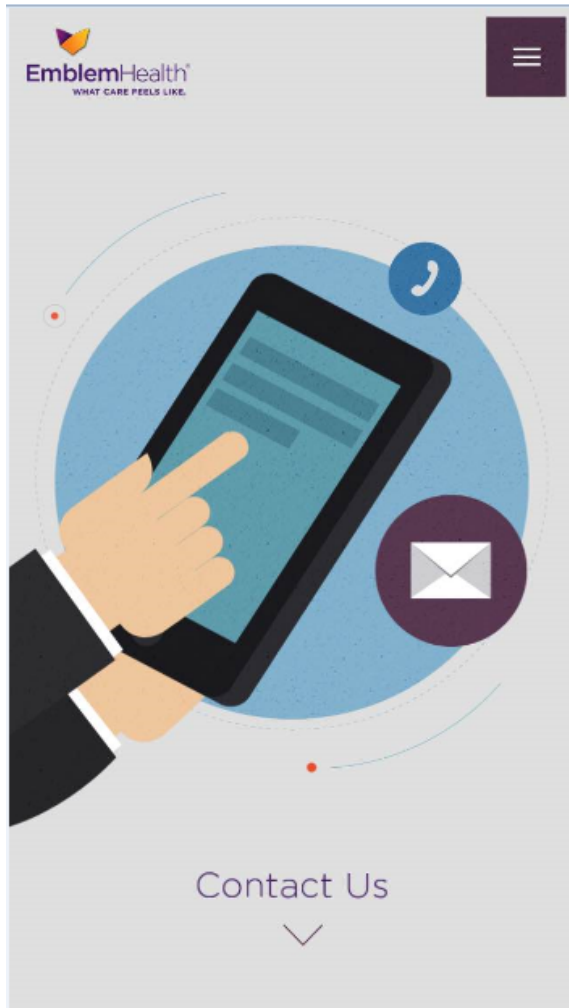
**Your Insurance May Cost\***

**\$353<sup>.55</sup>/month**  
after \$53.73/month in tax credits

Based on Silver Plan

Calculate My Tax Credit

# SECTION 3: CONTACT US



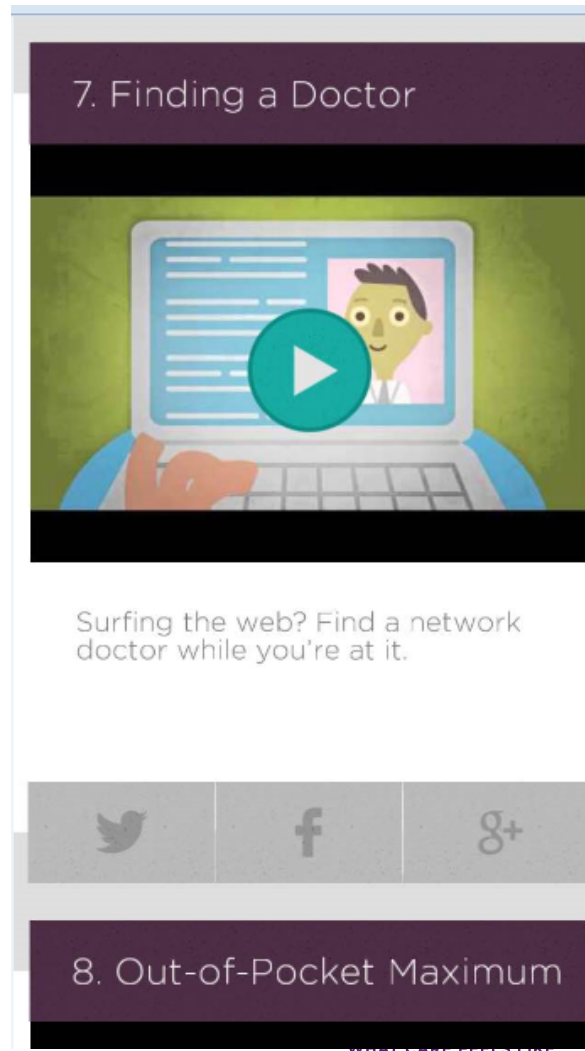
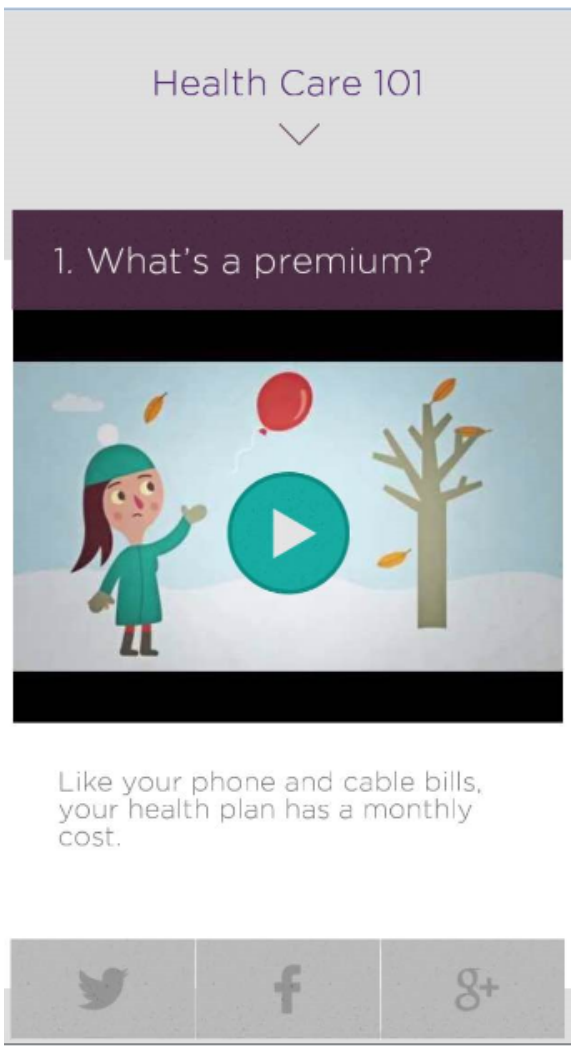
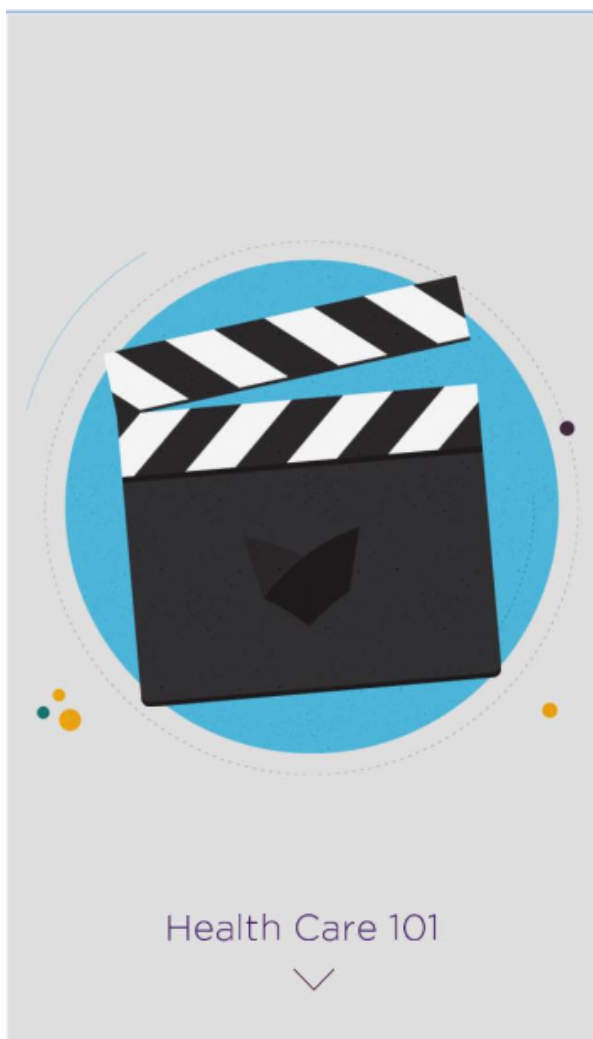
We'd love to chat with you. Call us, visit us or search the web.

NY State of Health Insurance Exchange	+
EmblemHealth Walk-In Center Midtown Manhattan	+
EmblemHealth Walk-In Center Lower Manhattan	+
EmblemHealth Neighborhood Care: Harlem	+
EmblemHealth Neighborhood Care: Chinatown	+
EmblemHealth Neighborhood Care: Cambria Heights	+
EmblemHealth Customer Service	+

We'd love to chat with you. Call us, visit us or search the web.

NY State of Health Insurance Exchange	—
	Phone Number 1-855-355-5777
	Website nystateofhealth.ny.gov
	Phone Number TTY: 1-800-662-1220
	Hours 8 am to 8 pm, Mon-Fri 9 am to 1 pm, Sat
EmblemHealth Walk-In Center Midtown Manhattan	+


# SECTION 4: HEALTH CARE 101





# SECTION 5: TEST YOUR KNOWLEDGE

Learn the ABC's of health care reform at emblemhealthreform.com. Then test your knowledge in 5 areas. Pick the right answer and you'll collect points as you go. Start by choosing a category.



Test Your Knowledge

- Health Benefits & Coverage
- NY's Health Insurance Marketplace
- Coverage Costs
- Affordable Care Act
- Key Terms

NY's Health Insurance Marketplace

1 2 3 4 5 **6** 7 8 9 10

Which does not qualify for a special enrollment period?

- Missed the deadline
- Got married
- Lost job-based coverage

Submit Answer

Next Question

NY's Health Insurance Marketplace

1 2 3 4 5 **6** 7 8 9 10

Correct!

- Missed the deadline
- Got married
- Lost job-based coverage

Next Question

< Quit 0 Pts > Quit 20 Pts



## SECTION 6: THINGS TO REMEMBER

